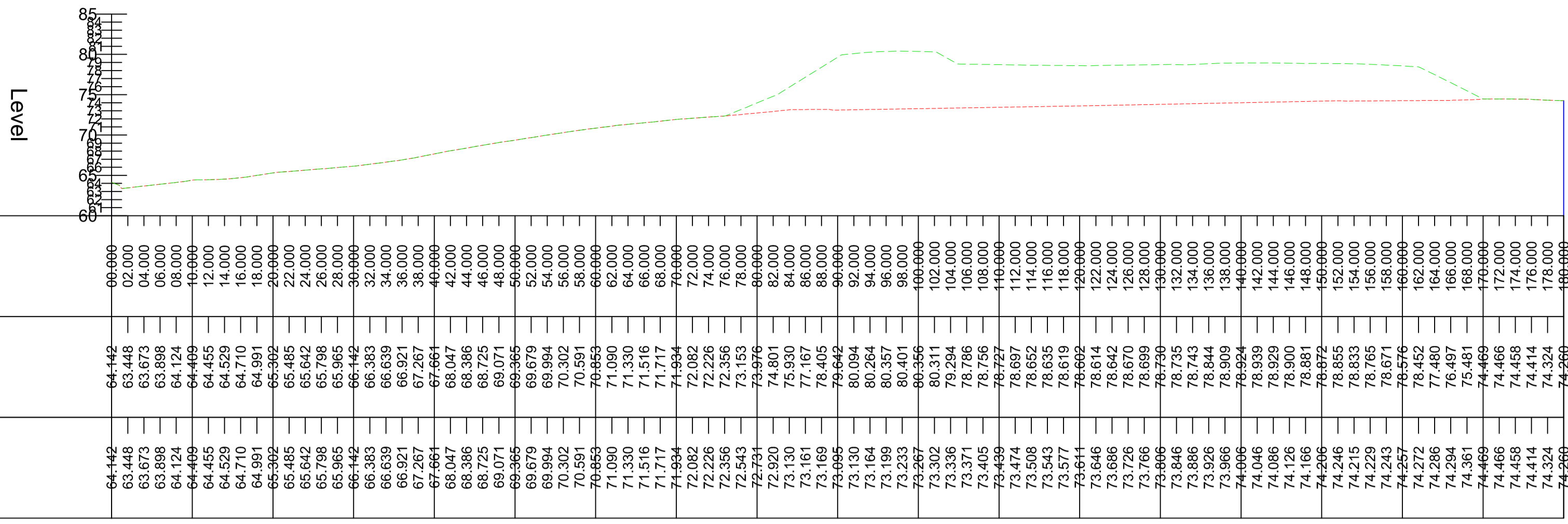
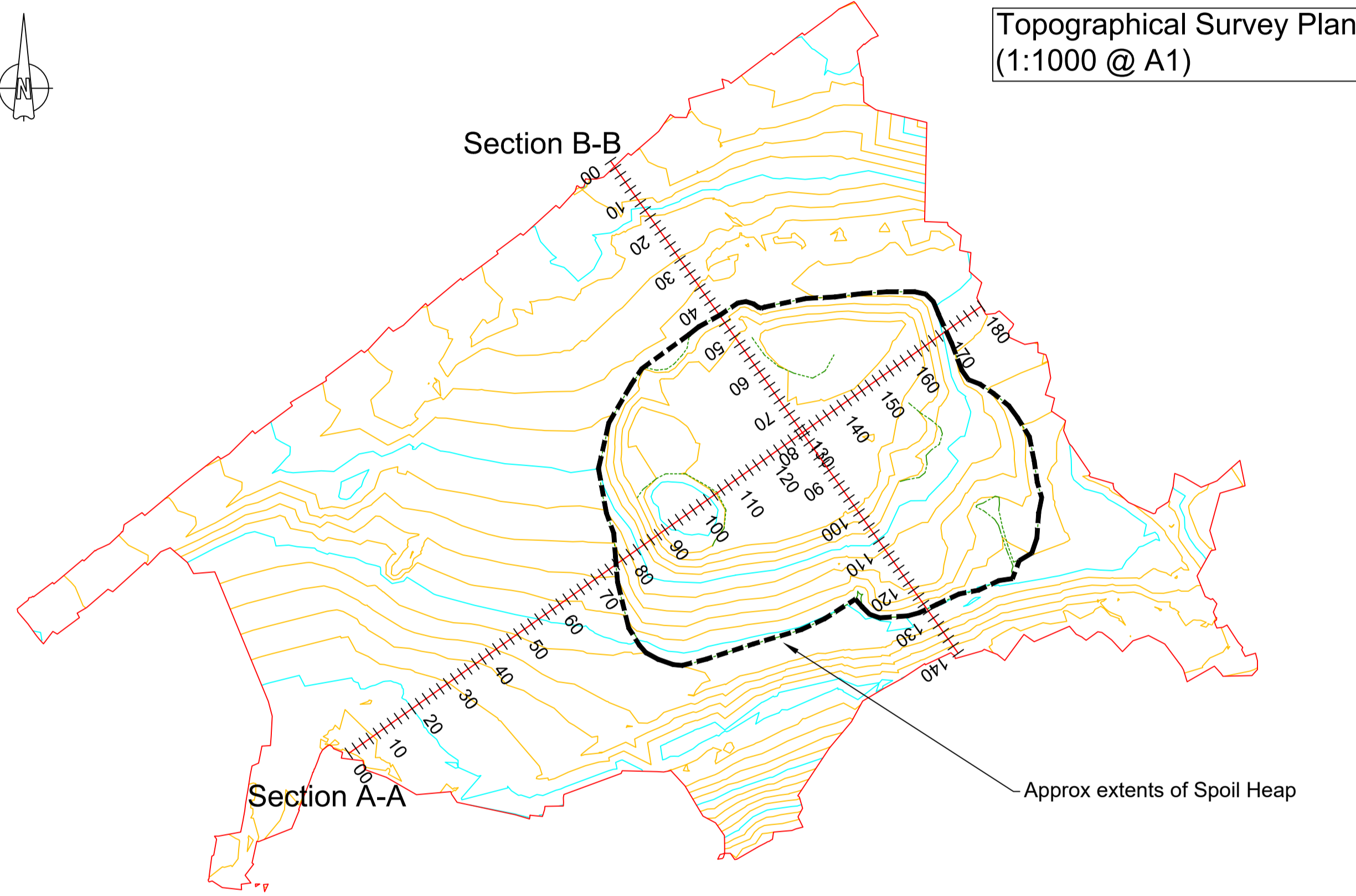
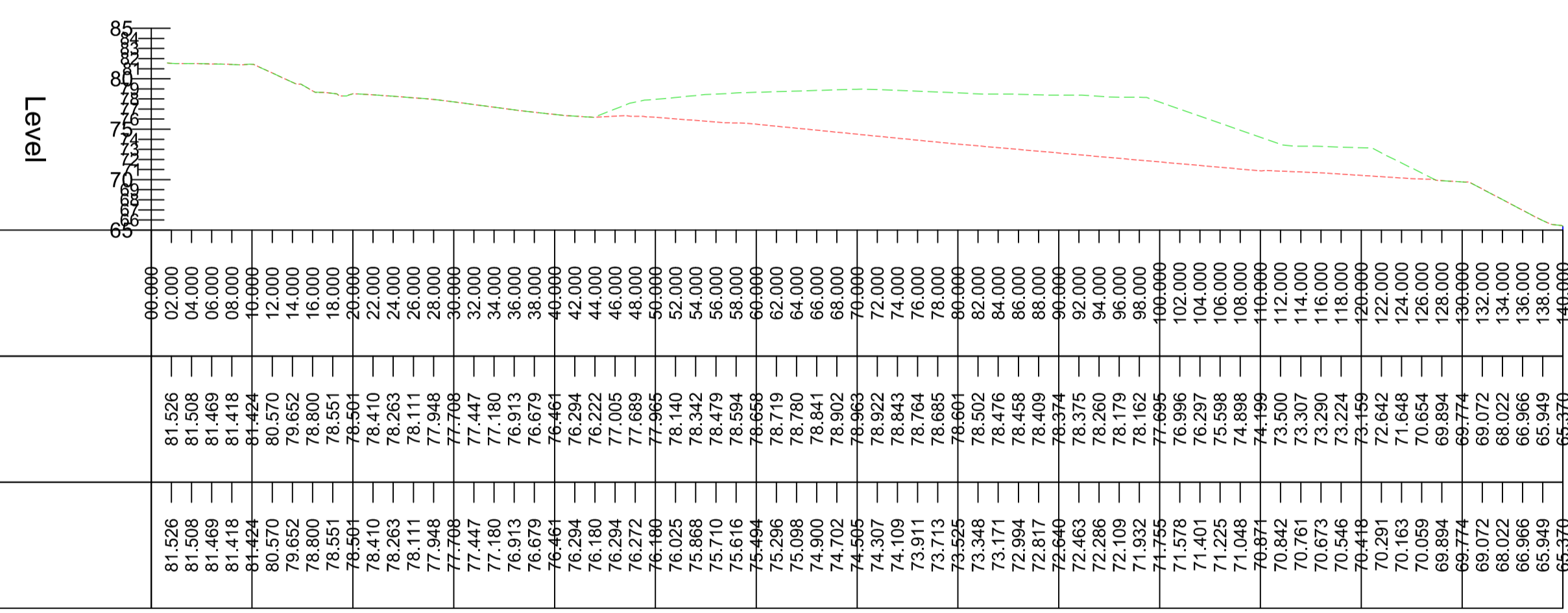


VOLUMETRIC ANALYSIS OF EXISTING SPOIL HEAP
 Volume of Spoil Heap on site modelled as 21,000m³.
 (The difference between the topo survey as shown with spoil heap in situ, and an amended topo survey to remove the spoil heap). - See 3d images below.

ALIGNMENT A-A - LONGSECTION
 SCALE: H 1:500,V 1:500. DATUM: 60.000

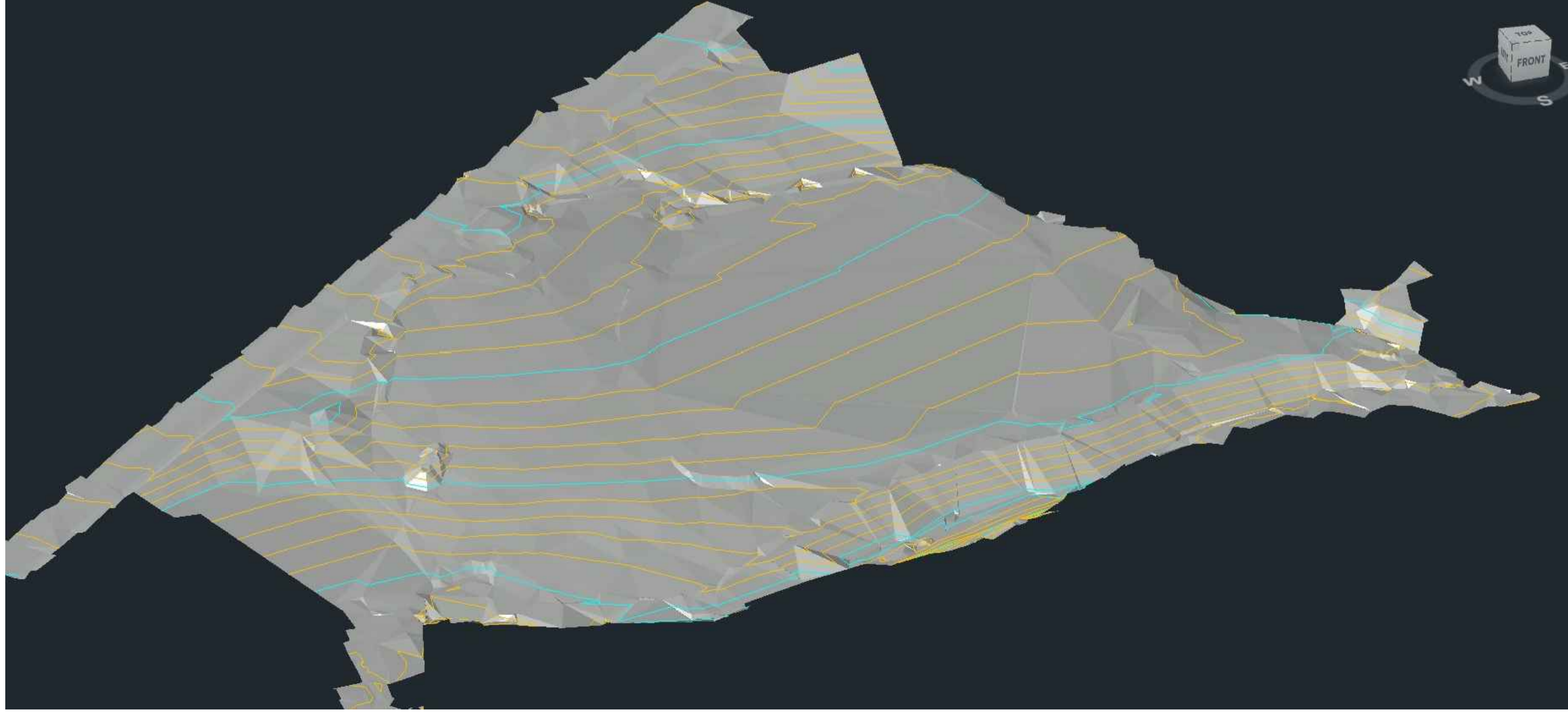
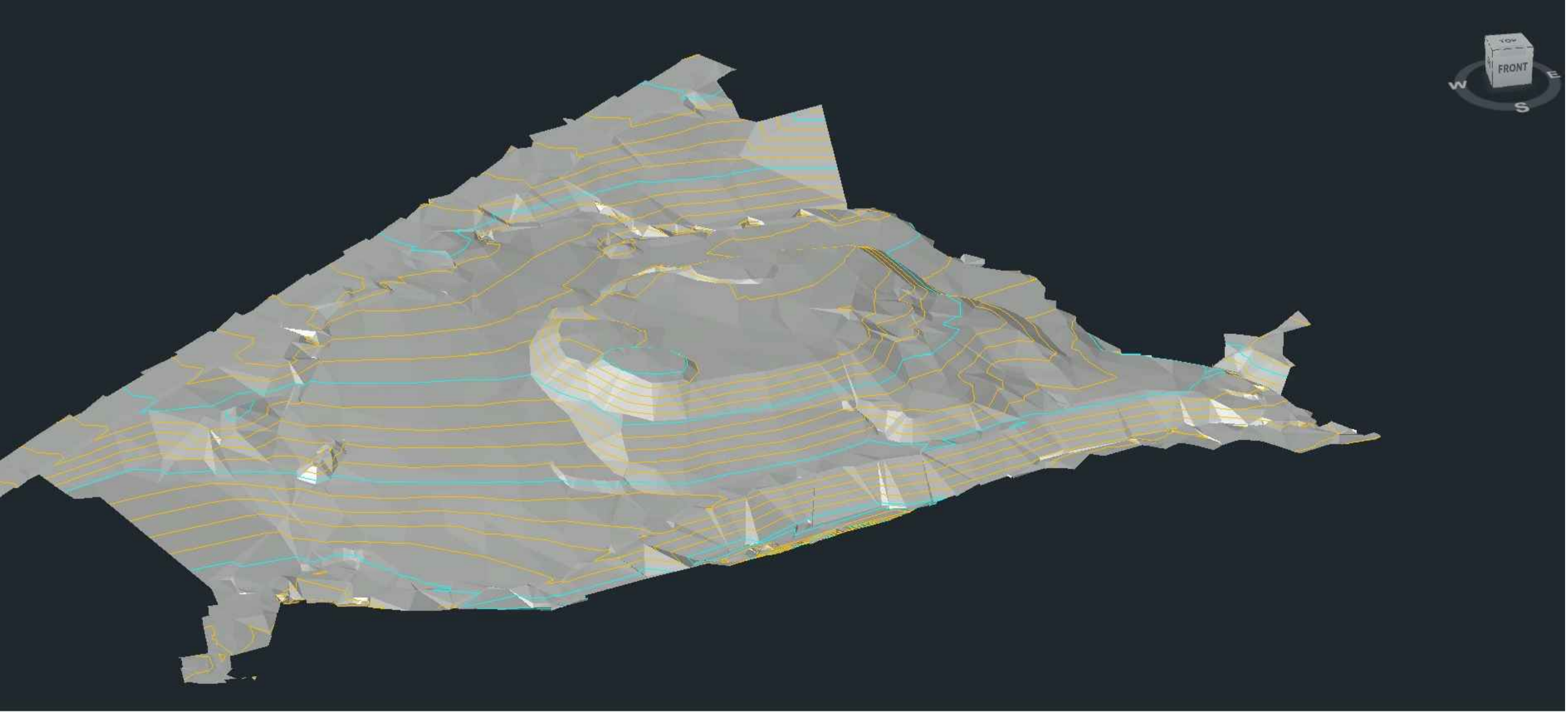


ALIGNMENT B-B - LONGSECTION
 SCALE: H 1:500,V 1:500. DATUM: 65.000



Topographical Survey Image - Inclusive of Spoil Heap

Topographical Survey Image - Spoil Heap removed



REV	DESCRIPTION	BY	DATE
status			
PRELIMINARY			
client			
ENZO HOMES			
project			
HEOL Y GLYN, GLYNNEATH			
drawing title			
EXISTING SITE - SPOIL HEAP VOLUME			
drawn	RE	chkd	-
date drawn	20/03/2019	project no.	9610
scale	N.T.S	dig no.	SK01
		rev.	-